

Multimessage Systems Limited

Dealer's stamp

Audio Module
User Guide

**Multimessage Systems Ltd.
Unit 1 / 2, Block 26,
Cranborne Industrial Estate,
Cranborne Road, Potters Bar, Herts.
EN6 3JH**

**Tel. 01707 644480
Fax 01707 646745
www.multimessage.co.uk**

ISSUE 1.1

Revised 06/09/05

**Model
M403**

GUARANTEE

Multimessage Systems Ltd. guarantees this product for one year from the date of purchase provided that:

- The product has only been used for its intended purpose, and has not been subjected to misuse, or been wilfully or accidentally damaged.
- The product has been installed according to the maker's Installation Instructions.
- The product has not been tampered with or repaired by anyone other than Multimessage Systems Ltd. or its approved agents.

If a fault occurs in this product within twelve months of purchase you should return it to where you bought it, together with the sales receipt, and it will then be replaced or repaired free of charge.

This guarantee does not affect your statutory rights and is applicable to the United Kingdom only.

CONTENTS

INTRODUCTION	4
M403 Features	4
Product Illustration	5
INSTALLATION	6
Installation of audio source	6
Typical Application	7
In Case of Difficulty	7
TECHNICAL NOTES	8

INTRODUCTION

The Multimessage M403 is an audio distribution panel. There are two inputs which accept two separate audio sources such as your HIFI or radio. Both inputs are connected to 4 outputs so you can drive 4 sets of stereo speakers with each input.

M403 Features

The M403 has the following features:

- 2 audio source inputs.
- Up to 4 sets of speakers per audio source.
- Pipe music throughout the house.
- Ideal for parties.

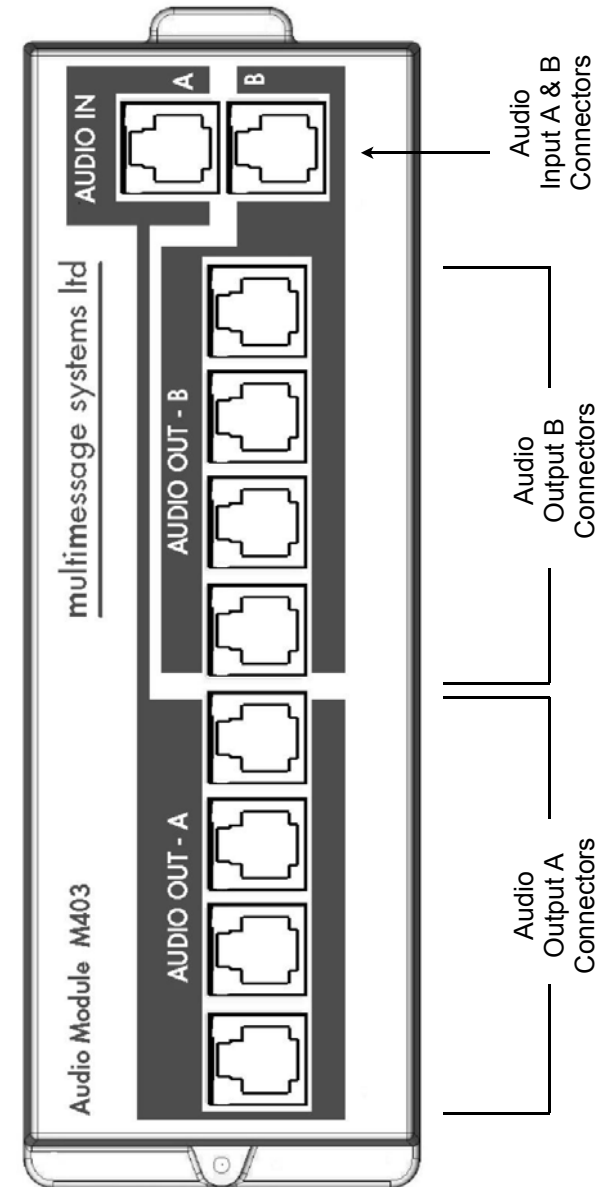
TECHNICAL NOTES

1. Interconnection circuits made to any port should be such that the equipment continues to comply with the requirements of EN60950 2.3 for SELV circuits. (The voltages in a SELV circuit shall not exceed 42.4V peak or 60V dc.) Advice should be sought from a competent engineer before such a connection is made.

2. Refer all servicing to qualified personnel or to the Multimessage Systems Customer Servicing Department at the address given on the back page of this handbook.

Input Ports	2
Output Ports	2 x 4
Dimensions	200mm l x 67mm wide x 33mm deep
Weight	270g
Temperature	0 to 40°C working
Relative Humidity	0 to 95% (non-condensing)

Product Illustration



INSTALLATION

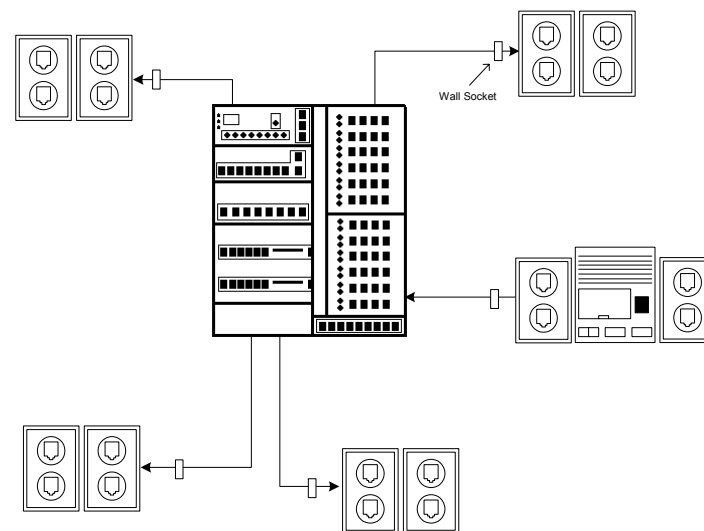
The M403 should already be fitted into the M400 chassis by an installation engineer. If the M403 has not been installed please follow the installation guide supplied with the unit.

Installation of audio source

- Select the correct cable for the audio source to be used:

Type	Part number
Audio Connector	400318001
Patch Lead	961015313
- Select a socket in the room required to connect the audio source to. Connect the audio source using the appropriate cable. Note down the number on the socket.
- On the patch panel, link the corresponding numbered socket on the patch side to one of the two input connectors on the M403, using the appropriate coloured patch lead.
- Connect the speakers using the appropriate cable to a wall socket in the location required.
- On the patch panel link the corresponding numbered socket on the patch side to one of the four output connectors on the M403, using the appropriate coloured patch lead.
- Powered PC type speakers can be used to provide independent volume control for each set of speakers, otherwise the volume is controlled by the source.

Typical Application



Connecting your HIFI to the M403 enables you to quickly and easily distribute music throughout your house. If you want independent control for each set of speakers, then speakers with built in powered amplifiers are recommended.

In Case of Difficulty

If problems occur with the M403 it is likely to be a poor or faulty connection to the module. Check all connections and check that the system has been patched correctly on the M400 patch panel.